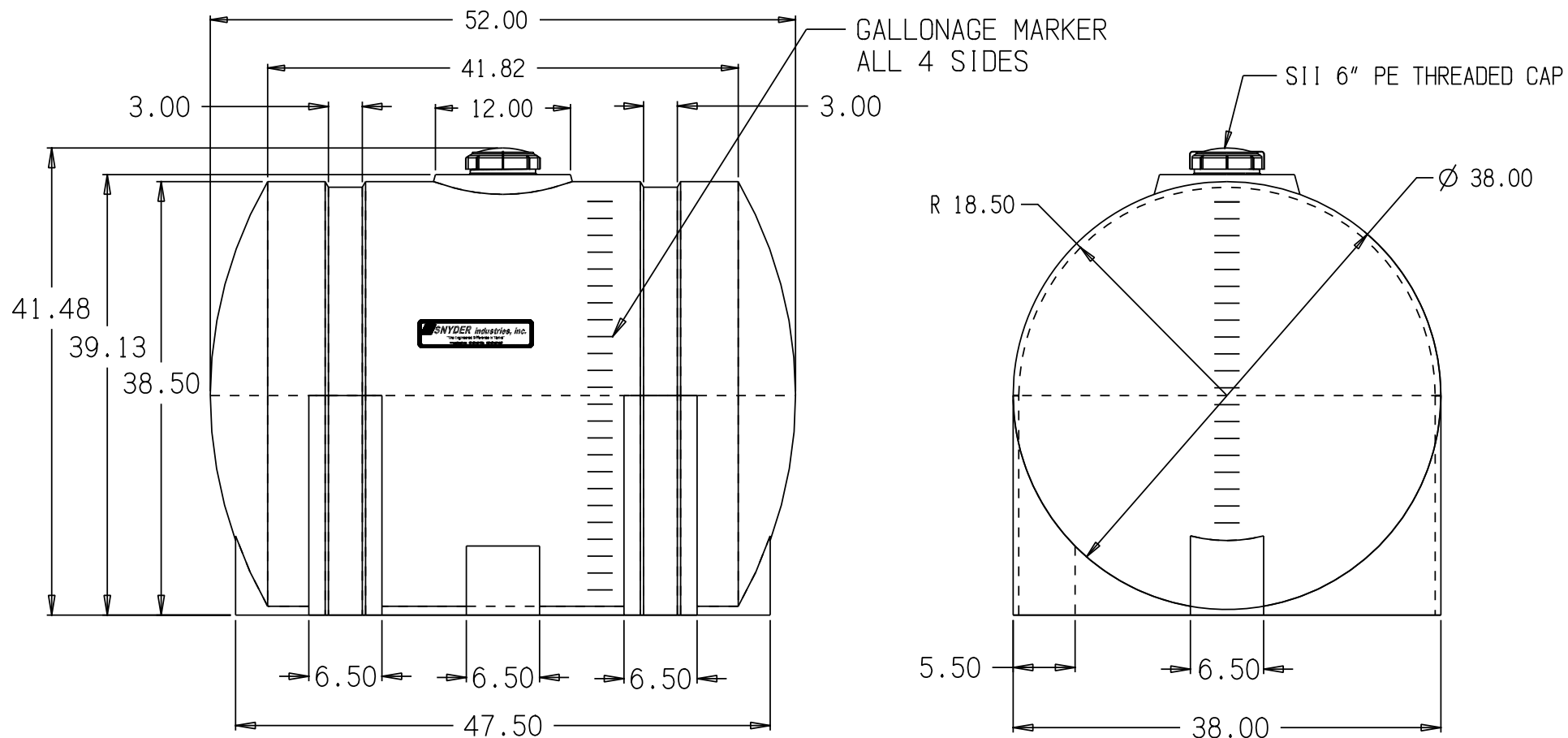


APPROX. BRIMFUL CAPACITY:
TANK: 232.2 GAL.

SNYDER INDUSTRIES INC.



* BASE FITTINGS TO BE LEFT INSTALLED AT TIME OF SHIPMENT PER SII PROCEDURE
* Consult Snyder's Guidelines for Use and Installation prior to delivery.
Available on-line at www.snydernet.com

(all dimensions in inches)

PART # TANK: 1003900N-- (M)

REF#: 00000

09/01/10

225 GALLON HORIZONTAL LEG TANK